



Forward Momentum

BI-MONTHLY NEWSLETTER FOR THE WAY FORWARD PROJECT

The National Lottery Heritage Fund Stages for Funding

First Round Bid

COMPLETE

Development Phase

COMPLETE

Second Round Bid

COMPLETE

Delivery Phase

November 2021

May 2022 - July 2023

August 2023

July 2024 - Dec 2027

We are thrilled to share that three new members are joining the project team. Esther Skidmore will serve as the Heritage Engagement Officer, Richard Wren will come on board as the Ecologist, and Caroline Wren will explore the past in her role as the Historian. We eagerly anticipate introducing them to you in the upcoming weeks. With the refurbishment well under way, these three new recruits, along with Sandi Merifield, will work together to implement the three-year Activity Plan, and it will be exciting to witness this vision come to life. You can find information of the types of activities planned on the website: www.wayforwardstebbing.org

Over 20 people enjoyed our first "Take A Look" tour this month. Entitled "Uncovering the Past - Excavations & Archaeology", visitors were able to come and find out what has been going on inside the church during three separate sessions.

Adrian, from Bakers of Danbury the contractor in charge of the renovation work, gave a short talk on what they have been doing so far. Excavating down to a depth of half a metre, the team had to first remove all the bricks and parquet flooring, with the re-usable bricks being stored off site. They sometimes had to drill through concrete and remove old pipes; lorries have been taking the rubble away daily.

Adrian then explained how the floor will be built back up again and what materials will be used. We learnt about "glapor", which is a foamed recycled glass aggregate (some samples were passed around). With an appearance like coal, it was surprisingly light in weight. It will be crushed down and form a breathable insulating layer at the bottom of the new floor.



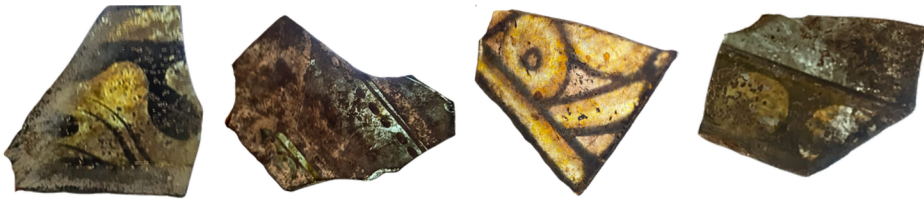


We also learnt about limecrete, which is a type of concrete but without cement, which will also form a layer on the new floor.

Megan from Colchester Archaeological Trust put on a fascinating display of artefacts such as old tobacco pipes, parts of the old rood screen and pieces of very old stained glass. Together with some interesting photos, she gave a short talk on her findings, which included a bricked over tomb and evidence of ancient church foundations.

Visitors were then invited from the vestry into the chancel, stepping down into the excavated area, with Megan and Adrian pointing out areas of interest. It was a highly enjoyable and informative day.

We look forward to the next Take a Look tour in February next year.



Here are several photos showcasing the work being done inside the church. At the moment, the Glapor layer is being applied. This process involves two layers, and it is quite time-consuming. The material must be brought in using industrial-sized bags, emptied, raked, and then tamped down to precise measurements!



Don't forget that Sunday meetings now take place at The Friends Meeting House on Stebbing High Street and all are welcome.

More information about the project can be found at www.wayforwardstebbing.org
Regular updates are also on our Facebook page